

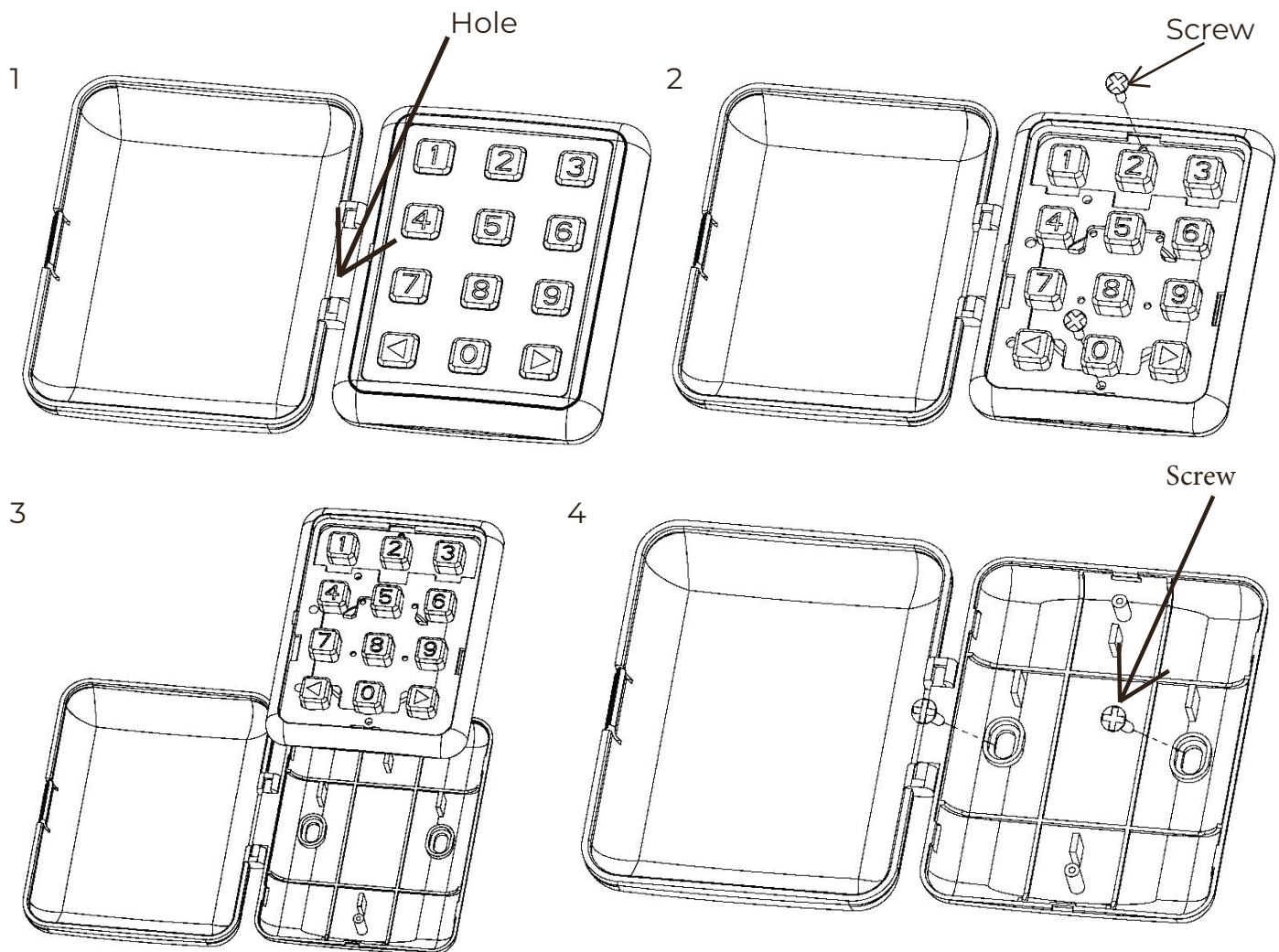
Instruction manual of Keypad T09-050-14-0004

Frequency: 433.92 MHz Rolling Code

Battery: CR2032 3V

- This is a dual channel transmitters that are activated only after having entered a suitable combination.
- The units are designed for installation in indoor or outdoor locations.
- The estimated transmission range is 50m.
- The units are designed to ensure battery life equivalent to an estimated 2000 transmissions.

Installation



1. Use a flat-blade screwdriver to pry the panel out of the hole. (Fig. 1)
2. Use a Phillips screwdriver to remove the two 2x7 screws to separate the board of wireless keypad. (Fig. 2-3)
3. Secure the cover to the wall with two 4X25 countersunk head tapping screws. (Fig.4)
4. Install as originally. (Fig.4-1)

Programming

1. Method of use

The use of the keypad is based on i.e. numbers from 1 to 9 digits that the user is required to key in by means of the keys.

Channel 1 initial password: 11. Enter the password 11, press < button to confirm.

Channel 2 initial password: 33 Enter the password 33, press > to confirm.

Long beep: The password is correct.

Rapid short beep: The password is wrong.

1. Changing the password:

Channel 1:

- a. Press the < button until you hear the long beep, the signal light in the upper left corner flashes.
- b. Enter the old password, press the < button to confirm.
 - Long beep & the signal light stop flash means the old password is correct
 - Rapid beep means the old password is wrong and exit password update.
- c. Enter the password with 1-8 digits, press the < button to confirm, the signal light in the lower left corner flashes.
 - Rapid short beep means the password exceeds 8 digits and exit password update.

Channel 2:

- a. Press the > button until you hear the long beep, the signal light in the upper left corner flashes.
- b. Enter the old password, press the > button to confirm.
 - Long beep & the signal light stop flash means the old password is correct.
 - Rapid beep means the old password is wrong and exit password update.
- c. Enter the password with 1-8 digits, press the > button to confirm, the signal light in the lower left corner flashes.
 - Rapid short beep means the password exceeds 8 digits and exit password update.
- d. Enter the new password again, press the > button to confirm.
 - Long beep means the same password twice.
 - Rapid short beep means different password twice and exit password update.